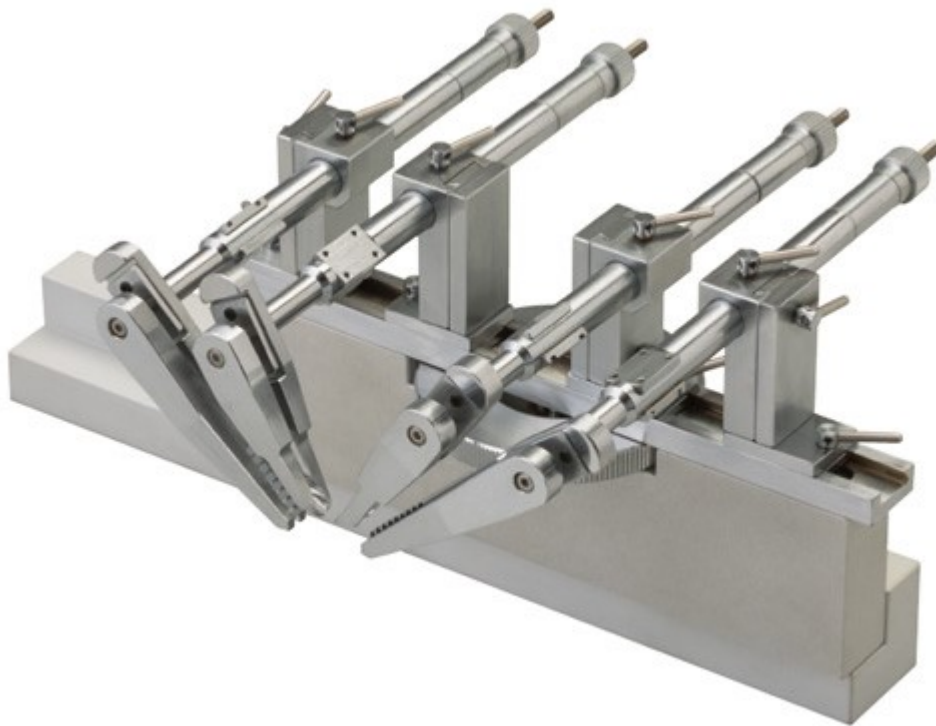


STS-B

Spinal Cord Clamps for Rats

Spinal cord clamps for rats.

Used with stereotaxic instruments for one AP frame bar type in the SR series, this device is designed to facilitate manual manipulation of spinal cord clamps in order to safely and gently clamp the rat spinal cord. It provides with a mechanism to raise or lower clamps for position adjustment or lifting.



Specification

Accessories included	Connecting rings Screws Hex Wrench
Dimensions/Weight	W205 × D140 × H95 ~ 125mm, 1.18kg

Specifications are subject to change without notice.

Copyright © NARISHIGE Group. All Rights Reserved. 1999-2019