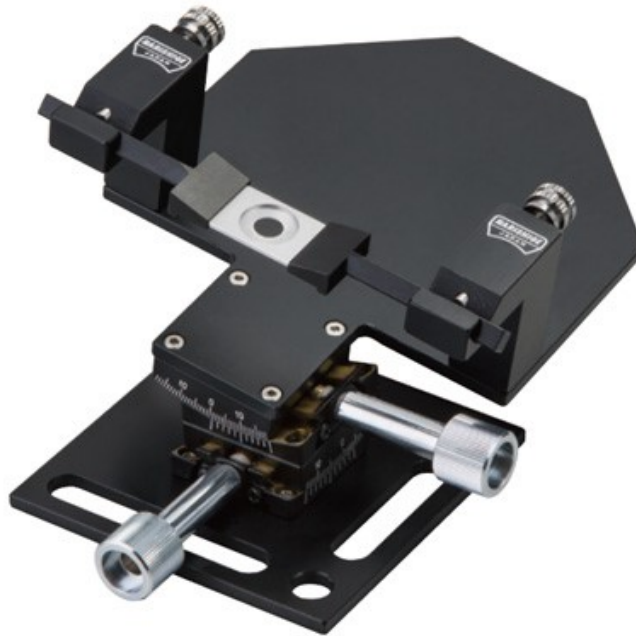


MAG-2

Head Holding Device (with Angle Adjuster / for Mice)

For deeper imaging experiments under a microscope.

After bonding a chamber onto the head of a mouse on the SR-9M-HT Stereotaxic Instrument, the MAG-2, designed to be compact in size, can be transferred and placed under a microscope or other experimental instrument for performing observations/experiments. The MAG-2 can be placed under a laser microscope or stereomicroscope, and is most suitable for in vivo observation/imaging experiments. Also equipped with angle adjusters for obtaining deeper images.

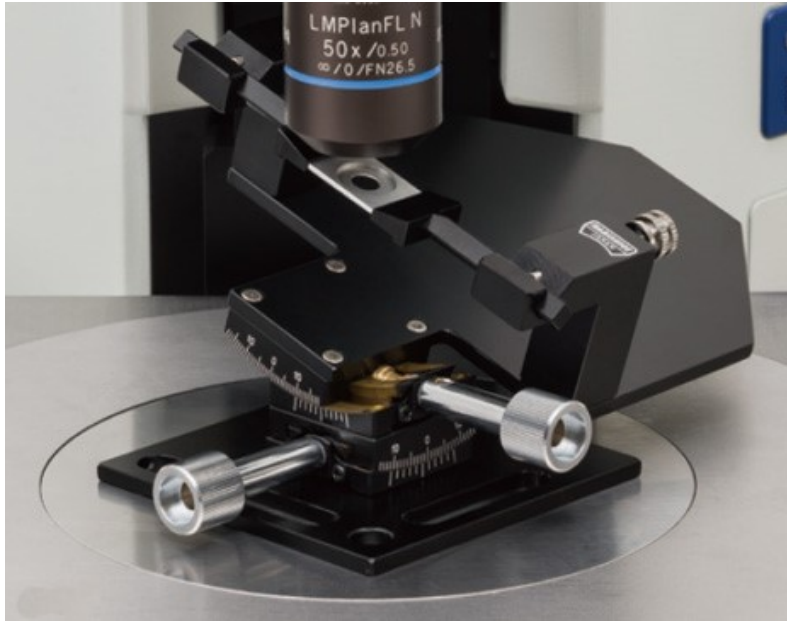


* Attachable chambers: CF-10, CP, CP-1, CP-2

MAG-2

Head Holding Device (with Angle Adjuster / for Mice)

Setting example



Setting example

Angle of inclination



Longitudinal inclination ($\pm 10^\circ$)



Lateral inclination ($\pm 15^\circ$)

Specification

| | |
|------------------------------------|--|
| <p>Accessories included</p> | <p>CP-1 Chamber Plate (one each) CP-2 Chamber Plate (one each) Hex Wrench Vinyl Sheet</p> |
|------------------------------------|--|

Dimensions/Weight

W87mm × D136mm × H58 ~ 72mm, 232g

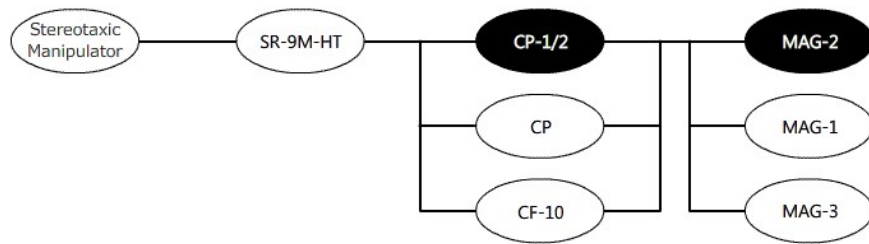
Maximum angle of inclination**Longitudinal** ±10°**Lateral** ±15°**Load-bearing Capacity**

0.5kg

* The chamber frame is customizable to your own application. Please contact us for details.

* The [CFR-1](#) / [CFR-2](#) Chamber Frame (for rats) can NOT be attached.

System Diagram



- refers to the model itself with standard attachments
- refers to attachable main accessories
- refers to types of mounting adaptors

Specifications are subject to change without notice.

Copyright © NARISHIGE Group. All Rights Reserved. 1999-2019